

**SAMPLE NAME: Tropical Clouds (1g)**

Concentrate, Product Inhalable

**CULTIVATOR / MANUFACTURER**

**Business Name:** Central Coast Ag Products, LLC

**License Number:** CDPH-10003156

**Address:** 1201 West Chestnut Ave. Lompoc CA 93436

**DISTRIBUTOR**

**Business Name:** CENTRAL COAST AG DISTRIBUTION, LLC

**License Number:** C11-0000496-LIC

**Address:** 1201 Chestnut St W Lompoc CA 93436



**SAMPLE DETAIL**

**Batch Number:** 220001096

**Sample ID:** 220826L006

**Source Metrc UID:**  
1A4060300002EE1000039125

**Date Collected:** 08/26/2022

**Date Received:** 08/27/2022

**Batch Size:** 3938.0 units

**Sample Size:** 20.0 units

**Unit Mass:** 1 grams per Unit

**Serving Size:**



Scan QR code to verify authenticity of results.

**Sampling Method:** QSP 1265 - Sampling of Cannabis and Product Batches

**CANNABINOID ANALYSIS - SUMMARY** ✔ PASS

**Sum of Cannabinoids: 89.28%**

**Total Cannabinoids: 89.28%**

**Total THC: 85.613%**

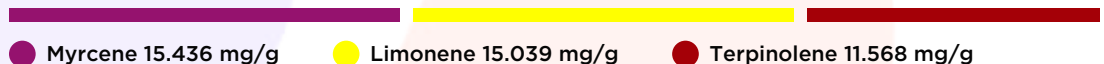
**Total CBD: 0.151%**

Sum of Cannabinoids =  $\Delta^9$ -THC + THCa + CBD + CBDa + CBG + CBGa + THCv + THCVa + CBC + CBCa + CBDV + CBDVa +  $\Delta^8$ -THC + CBL + CBN  
 Total Cannabinoids = ( $\Delta^9$ -THC+0.877\*THCa) + (CBD+0.877\*CBDa) + (CBG+0.877\*CBGa) + (THCV+0.877\*THCVa) + (CBC+0.877\*CBCa) + (CBDV+0.877\*CBDVa) +  $\Delta^8$ -THC + CBL + CBN  
 Total THC/CBD is calculated using the following formulas to take into account the loss of a carboxyl group during the decarboxylation step:  
 Total THC =  $\Delta^9$ -THC + (THCa (0.877))  
 Total CBD = CBD + (CBDa (0.877))

**TERPENOID ANALYSIS - SUMMARY**

39 TESTED, TOP 3 HIGHLIGHTED

**Total Terpenoids: 7.3071%**



**SAFETY ANALYSIS - SUMMARY**

$\Delta^9$ -THC per Unit: ✔ PASS

Pesticides: ✔ PASS

Mycotoxins: ✔ PASS

Residual Solvents: ✔ PASS

Heavy Metals: ✔ PASS

Microbiology: ✔ PASS

Foreign Material: ✔ PASS

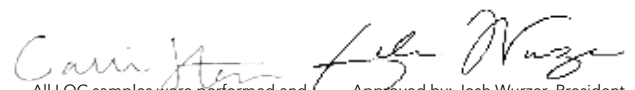
These results relate only to the sample included on this report.

This report shall not be reproduced, except in full, without written approval of the laboratory.

**Sample Certification:** California Code of Regulations Title 4 Division 19. Department of Cannabis Control Business and Professions Code. Reference: Sections 26100, 26104 and 26110, Business and Professions Code.

**Decision Rule:** Statements of conformity (e.g. Pass/Fail) to specifications are made in this report without taking measurement uncertainty into account. Where statements of conformity are made in this report, the following decision rules are applied: PASS - Results within limits/specifications, FAIL - Results exceed limits/specifications.

**References:** limit of detection (LOD), limit of quantification (LOQ), not detected (ND), not tested (NT)

  
 Approved by: Josh Wurzer, President  
 Date: 08/28/2022  
 All LQC samples were performed and met the prescribed acceptance criteria in 4 CCR section 1730, as attested by:  
 Callie Stone  
 Date: 08/28/2022



**CANNABINOID TEST RESULTS** - 08/28/2022 ✔ PASS

Tested by high-performance liquid chromatography with diode-array detection (HPLC-DAD). **Method:** QSP 1157 - Analysis of Cannabinoids by HPLC-DAD

**TOTAL CANNABINOIDS: 89.28%**

Total Cannabinoids (Total THC) + (Total CBD) + (Total CBG) + (Total THCV) + (Total CBC) + (Total CBDV) + Δ<sup>8</sup>-THC + CBL + CBN

**TOTAL THC: 85.613%**

Total THC (Δ<sup>8</sup>-THC+0.877\*THCa)

**TOTAL CBD: 0.151%**

Total CBD (CBD+0.877\*CBDA)

**TOTAL CBG: 2.794%**

Total CBG (CBG+0.877\*CBGa)

**TOTAL THCV: 0.55%**

Total THCV (THCV+0.877\*THCVa)

**TOTAL CBC: ND**

Total CBC (CBC+0.877\*CBCa)

**TOTAL CBDV: ND**

Total CBDV (CBDV+0.877\*CBDVa)

COMPOUND	LOD/LOQ (mg/g)	MEASUREMENT UNCERTAINTY (mg/g)	RESULT (mg/g)	RESULT (%)
Δ <sup>9</sup> -THC	0.06 / 0.26	±22.944	856.13	85.613
CBG	0.06 / 0.19	±0.858	27.94	2.794
THCV	0.1 / 0.2	±0.21	5.5	0.55
CBN	0.1 / 0.3	±0.09	1.7	0.17
CBD	0.07 / 0.29	±0.054	1.51	0.151
Δ <sup>8</sup> -THC	0.1 / 0.4	N/A	ND	ND
THCa	0.05 / 0.14	N/A	ND	ND
THCVa	0.07 / 0.20	N/A	ND	ND
CBDA	0.02 / 0.19	N/A	ND	ND
CBDV	0.04 / 0.15	N/A	ND	ND
CBDVa	0.03 / 0.53	N/A	ND	ND
CBGa	0.1 / 0.2	N/A	ND	ND
CBL	0.06 / 0.24	N/A	ND	ND
CBC	0.2 / 0.5	N/A	ND	ND
CBCa	0.07 / 0.28	N/A	ND	ND
<b>SUM OF CANNABINOIDS</b>			<b>892.8 mg/g</b>	<b>89.28%</b>

**UNIT MASS: 1 grams per Unit**

Δ <sup>9</sup> -THC per Unit	1100 per-package limit	856.13 mg/unit	PASS
Total THC per Unit		856.13 mg/unit	
CBD per Unit		1.51 mg/unit	
Total CBD per Unit		1.51 mg/unit	
Sum of Cannabinoids per Unit		892.8 mg/unit	
Total Cannabinoids per Unit		892.8 mg/unit	

**TERPENOID TEST RESULTS** - 08/28/2022

Terpene analysis utilizing gas chromatography-flame ionization detection (GC-FID). **Method:** QSP 1192 - Analysis of Terpenoids by GC-FID

COMPOUND	LOD/LOQ (mg/g)	MEASUREMENT UNCERTAINTY (mg/g)	RESULT (mg/g)	RESULT (%)
Myrcene	0.008 / 0.025	±0.1544	15.436	1.5436
Limonene	0.005 / 0.016	±0.1669	15.039	1.5039
Terpinolene	0.008 / 0.026	±0.1839	11.568	1.1568
β-Caryophyllene	0.004 / 0.012	±0.1968	7.106	0.7106
β-Ocimene	0.006 / 0.020	±0.1098	4.393	0.4393
β-Pinene	0.004 / 0.014	±0.0347	3.895	0.3895
α-Pinene	0.005 / 0.017	±0.0219	3.273	0.3273
Linalool	0.009 / 0.032	±0.0876	2.961	0.2961
α-Humulene	0.009 / 0.029	±0.0467	1.869	0.1869
trans-β-Farnesene	0.008 / 0.025	±0.0382	1.384	0.1384
Fenchol	0.010 / 0.034	±0.0344	1.142	0.1142
Terpineol	0.009 / 0.031	±0.0500	1.047	0.1047
Valencene	0.009 / 0.030	±0.0337	0.629	0.0629
α-Phellandrene	0.006 / 0.020	±0.0043	0.406	0.0406
Camphene	0.005 / 0.015	±0.0036	0.400	0.0400
α-Terpinene	0.005 / 0.017	±0.0044	0.375	0.0375
Δ <sup>3</sup> -Carene	0.005 / 0.018	±0.0039	0.355	0.0355
γ-Terpinene	0.006 / 0.018	±0.0044	0.329	0.0329
Guaiol	0.009 / 0.030	±0.0102	0.278	0.0278
Borneol	0.005 / 0.016	±0.0090	0.275	0.0275
Fenchone	0.009 / 0.028	±0.0048	0.212	0.0212
Nerolidol	0.006 / 0.019	±0.0081	0.165	0.0165
Citronellol	0.003 / 0.010	±0.0045	0.119	0.0119
p-Cymene	0.005 / 0.016	±0.0022	0.106	0.0106
Eucalyptol	0.006 / 0.018	±0.0017	0.088	0.0088
α-Bisabolol	0.008 / 0.026	±0.0034	0.083	0.0083
Caryophyllene Oxide	0.010 / 0.033	±0.0018	0.051	0.0051
Sabinene	0.004 / 0.014	±0.0004	0.038	0.0038
Sabinene Hydrate	0.006 / 0.022	±0.0011	0.036	0.0036
Nerol	0.003 / 0.011	±0.0004	0.013	0.0013
Isoborneol	0.004 / 0.012	N/A	<LOQ	<LOQ
Isopulegol	0.005 / 0.016	N/A	ND	ND
Camphor	0.006 / 0.019	N/A	ND	ND
Menthol	0.008 / 0.025	N/A	ND	ND
Pulegone	0.003 / 0.011	N/A	ND	ND
Geraniol	0.002 / 0.007	N/A	ND	ND
Geranyl Acetate	0.004 / 0.014	N/A	ND	ND
α-Cedrene	0.005 / 0.016	N/A	ND	ND
Cedrol	0.008 / 0.027	N/A	ND	ND
<b>TOTAL TERPENOIDS</b>			<b>73.071 mg/g</b>	<b>7.3071%</b>