

**SAMPLE NAME: Sour Tsunami (0.5g)**

Concentrate, Product Inhalable

**CULTIVATOR / MANUFACTURER**

**Business Name:** Central Coast Ag Products, LLC

**License Number:** CDPH-10003156

**Address:** 1201 West Chestnut Ave. Lompoc CA 93436

**DISTRIBUTOR**

**Business Name:** CENTRAL COAST AG DISTRIBUTION, LLC

**License Number:** C11-0000496-LIC

**Address:** 1201 Chestnut St W Lompoc CA 93436



**SAMPLE DETAIL**

**Batch Number:** 220000747

**Sample ID:** 220622M006

**Source Metrc UID:**  
 1A4060300002EE1000035103

**Date Collected:** 06/22/2022

**Date Received:** 06/23/2022

**Batch Size:** 1662.0 units

**Sample Size:** 36.0 units

**Unit Mass:** 0.5 grams per Unit

**Serving Size:**



Scan QR code to verify authenticity of results.

**Sampling Method:** QSP 1265 - Sampling of Cannabis and Product Batches

**CANNABINOID ANALYSIS - SUMMARY **PASS****

**Sum of Cannabinoids: 92.16%**

**Total Cannabinoids: 92.16%**

**Total THC: 88.419%**

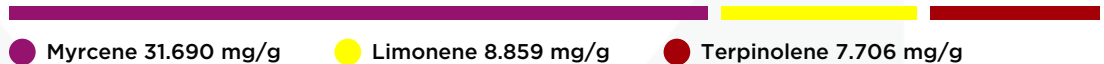
**Total CBD: 0.156%**

Sum of Cannabinoids =  $\Delta^9$ -THC + THCa + CBD + CBDa + CBG + CBGa + THCV + THCVa + CBC + CBCa + CBDV + CBDVa +  $\Delta^8$ -THC + CBL + CBN  
 Total Cannabinoids = ( $\Delta^9$ -THC+0.877\*THCa) + (CBD+0.877\*CBDa) + (CBG+0.877\*CBGa) + (THCV+0.877\*THCVa) + (CBC+0.877\*CBCa) + (CBDV+0.877\*CBDVa) +  $\Delta^8$ -THC + CBL + CBN  
 Total THC/CBD is calculated using the following formulas to take into account the loss of a carboxyl group during the decarboxylation step:  
 Total THC =  $\Delta^9$ -THC + (THCa (0.877))  
 Total CBD = CBD + (CBDa (0.877))

**TERPENOID ANALYSIS - SUMMARY**

39 TESTED, TOP 3 HIGHLIGHTED

**Total Terpenoids: 6.5787%**



**SAFETY ANALYSIS - SUMMARY**

**$\Delta^9$ -THC per Unit: **PASS****

**Pesticides: **PASS****

**Mycotoxins: **PASS****

**Residual Solvents: **PASS****

**Heavy Metals: **PASS****

**Microbiology: **PASS****

**Foreign Material: **PASS****

These results relate only to the sample included on this report. This report shall not be reproduced, except in full, without written approval of the laboratory.

**Sample Certification:** California Code of Regulations Title 16 Effect Date January 16, 2019. Authority: Section 26013, Business and Professions Code. Reference: Sections 26100, 26104 and 26110, Business and Professions Code.

**Decision Rule:** Statements of conformity (e.g. Pass/Fail) to specifications are made in this report without taking measurement uncertainty into account. Where statements of conformity are made in this report, the following decision rules are applied: PASS - Results within limits/specifications, FAIL - Results exceed limits/specifications.

**References:** limit of detection (LOD), limit of quantification (LOQ), not detected (ND), not tested (NT)

*Michael Pham*  
 All LQC samples were performed and met the prescribed acceptance criteria in 4 CCR section 1730, as attested by:  
 Michael Pham  
 Date: 06/24/2022

*Josh Wurzer*  
 Approved by: Josh Wurzer, President  
 Date: 06/24/2022



**CANNABINOID TEST RESULTS** - 06/23/2022 ✔ PASS

Tested by high-performance liquid chromatography with diode-array detection (HPLC-DAD). **Method:** QSP 1157 - Analysis of Cannabinoids by HPLC-DAD

**TOTAL CANNABINOIDS: 92.16%**

Total Cannabinoids (Total THC) + (Total CBD) + (Total CBG) + (Total THCV) + (Total CBC) + (Total CBDV) + Δ<sup>8</sup>-THC + CBL + CBN

**TOTAL THC: 88.419%**

Total THC (Δ<sup>8</sup>-THC+0.877\*THCa)

**TOTAL CBD: 0.156%**

Total CBD (CBD+0.877\*CBDA)

**TOTAL CBG: 2.594%**

Total CBG (CBG+0.877\*CBGa)

**TOTAL THCV: 0.52%**

Total THCV (THCV+0.877\*THCVa)

**TOTAL CBC: ND**

Total CBC (CBC+0.877\*CBCa)

**TOTAL CBDV: ND**

Total CBDV (CBDV+0.877\*CBDVa)

COMPOUND	LOD/LOQ (mg/g)	MEASUREMENT UNCERTAINTY (mg/g)	RESULT (mg/g)	RESULT (%)
Δ <sup>9</sup> -THC	0.06 / 0.26	±23.696	884.19	88.419
CBG	0.06 / 0.19	±0.796	25.94	2.594
THCV	0.1 / 0.2	±0.20	5.2	0.52
CBN	0.1 / 0.3	±0.12	2.4	0.24
Δ <sup>8</sup> -THC	0.1 / 0.4	±0.14	2.3	0.23
CBD	0.07 / 0.29	±0.056	1.56	0.156
THCa	0.05 / 0.14	N/A	ND	ND
THCVa	0.07 / 0.20	N/A	ND	ND
CBDA	0.02 / 0.19	N/A	ND	ND
CBDV	0.04 / 0.15	N/A	ND	ND
CBDVa	0.03 / 0.53	N/A	ND	ND
CBGa	0.1 / 0.2	N/A	ND	ND
CBL	0.06 / 0.24	N/A	ND	ND
CBC	0.2 / 0.5	N/A	ND	ND
CBCa	0.07 / 0.28	N/A	ND	ND
<b>SUM OF CANNABINOIDS</b>			921.6 mg/g	92.16%

**UNIT MASS: 0.5 grams per Unit**

Δ <sup>9</sup> -THC per Unit	1100 per-package limit	442.10 mg/unit	PASS
Total THC per Unit		442.10 mg/unit	
CBD per Unit		0.78 mg/unit	
Total CBD per Unit		0.78 mg/unit	
Sum of Cannabinoids per Unit		460.8 mg/unit	
Total Cannabinoids per Unit		460.8 mg/unit	

**TERPENOID TEST RESULTS** - 06/24/2022

Terpene analysis utilizing gas chromatography-flame ionization detection (GC-FID). **Method:** QSP 1192 - Analysis of Terpenoids by GC-FID

COMPOUND	LOD/LOQ (mg/g)	MEASUREMENT UNCERTAINTY (mg/g)	RESULT (mg/g)	RESULT (%)
Myrcene	0.008 / 0.025	±0.3169	31.690	3.1690
Limonene	0.005 / 0.016	±0.0983	8.859	0.8859
Terpinolene	0.008 / 0.026	±0.1225	7.706	0.7706
β-Ocimene	0.006 / 0.020	±0.1296	5.185	0.5185
β-Caryophyllene	0.004 / 0.012	±0.0916	3.308	0.3308
β-Pinene	0.004 / 0.014	±0.0183	2.060	0.2060
α-Pinene	0.005 / 0.017	±0.0121	1.800	0.1800
Linalool	0.009 / 0.032	±0.0479	1.617	0.1617
α-Humulene	0.009 / 0.029	±0.0218	0.874	0.0874
Terpineol	0.009 / 0.031	±0.0267	0.559	0.0559
Fenchol	0.010 / 0.034	±0.0158	0.525	0.0525
α-Phellandrene	0.006 / 0.020	±0.0026	0.248	0.0248
Δ <sup>3</sup> -Carene	0.005 / 0.018	±0.0023	0.204	0.0204
α-Terpinene	0.005 / 0.017	±0.0023	0.200	0.0200
Camphene	0.005 / 0.015	±0.0015	0.170	0.0170
Valencene	0.009 / 0.030	±0.0082	0.153	0.0153
γ-Terpinene	0.006 / 0.018	±0.0020	0.150	0.0150
trans-β-Farnesene	0.008 / 0.025	±0.0034	0.124	0.0124
Borneol	0.005 / 0.016	±0.0028	0.085	0.0085
Caryophyllene Oxide	0.010 / 0.033	±0.0028	0.079	0.0079
Fenchone	0.009 / 0.028	±0.0012	0.054	0.0054
p-Cymene	0.005 / 0.016	±0.0010	0.047	0.0047
α-Bisabolol	0.008 / 0.026	±0.0012	0.030	0.0030
Sabinene	0.004 / 0.014	±0.0002	0.025	0.0025
Eucalyptol	0.006 / 0.018	±0.0005	0.023	0.0023
Citronellol	0.003 / 0.010	±0.0005	0.012	0.0012
Sabinene Hydrate	0.006 / 0.022	N/A	<LOQ	<LOQ
Nerol	0.003 / 0.011	N/A	<LOQ	<LOQ
Geraniol	0.002 / 0.007	N/A	<LOQ	<LOQ
Geranyl Acetate	0.004 / 0.014	N/A	<LOQ	<LOQ
Nerolidol	0.006 / 0.019	N/A	<LOQ	<LOQ
Isopulegol	0.005 / 0.016	N/A	ND	ND
Camphor	0.006 / 0.019	N/A	ND	ND
Isoborneol	0.004 / 0.012	N/A	ND	ND
Menthol	0.008 / 0.025	N/A	ND	ND
Pulegone	0.003 / 0.011	N/A	ND	ND
α-Cedrene	0.005 / 0.016	N/A	ND	ND
Guaiol	0.009 / 0.030	N/A	ND	ND
Cedrol	0.008 / 0.027	N/A	ND	ND
<b>TOTAL TERPENOIDS</b>			65.787 mg/g	6.5787%