

**SAMPLE NAME: Island Getaway (1g)**

Concentrate, Product Inhalable

**CULTIVATOR / MANUFACTURER**

**Business Name:** Central Coast Ag Products, LLC

**License Number:** CDPH-10003156

**Address:** 1201 West Chestnut Ave. Lompoc CA 93436

**DISTRIBUTOR**

**Business Name:** CENTRAL COAST AG DISTRIBUTION, LLC

**License Number:** C11-0000496-LIC

**Address:** 1201 Chestnut St W Lompoc CA 93436



**SAMPLE DETAIL**

**Batch Number:** 220000545

**Sample ID:** 220509L004

**Source Metrc UID:**  
 1A4060300002EE1000032139

**Date Collected:** 05/09/2022

**Date Received:** 05/10/2022

**Batch Size:** 3835.0 units

**Sample Size:** 20.0 units

**Unit Mass:** 1 grams per Unit

**Serving Size:**



Scan QR code to verify authenticity of results.

**Sampling Method:** QSP 1265 - Sampling of Cannabis and Product Batches

**CANNABINOID ANALYSIS - SUMMARY** ✔ PASS

**Sum of Cannabinoids:** 85.64%

**Total Cannabinoids:** 85.64%

**Total THC:** 82.546%

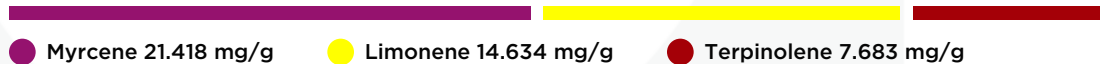
**Total CBD:** 0.173%

Sum of Cannabinoids =  $\Delta^9$ -THC + THCa + CBD + CBDa + CBG + CBGa + THCV + THCVa + CBC + CBCa + CBDV + CBDVa +  $\Delta^8$ -THC + CBL + CBN  
 Total Cannabinoids =  $(\Delta^9$ -THC + 0.877\*THCa) + (CBD + 0.877\*CBDa) + (CBG + 0.877\*CBGa) + (THCV + 0.877\*THCVa) + (CBC + 0.877\*CBCa) + (CBDV + 0.877\*CBDVa) +  $\Delta^8$ -THC + CBL + CBN  
 Total THC/CBD is calculated using the following formulas to take into account the loss of a carboxyl group during the decarboxylation step:  
 Total THC =  $\Delta^9$ -THC + (THCa (0.877))  
 Total CBD = CBD + (CBDa (0.877))

**TERPENOID ANALYSIS - SUMMARY**

39 TESTED, TOP 3 HIGHLIGHTED

**Total Terpenoids:** 6.564%



**SAFETY ANALYSIS - SUMMARY**

**$\Delta^9$ -THC per Unit:** ✔ PASS

**Pesticides:** ✔ PASS

**Mycotoxins:** ✔ PASS

**Residual Solvents:** ✔ PASS

**Heavy Metals:** ✔ PASS

**Microbiology:** ✔ PASS

**Foreign Material:** ✔ PASS

These results relate only to the sample included on this report. This report shall not be reproduced, except in full, without written approval of the laboratory.

**Sample Certification:** California Code of Regulations Title 16 Effect Date January 16, 2019. Authority: Section 26013, Business and Professions Code. Reference: Sections 26100, 26104 and 26110, Business and Professions Code.

**Decision Rule:** Statements of conformity (e.g. Pass/Fail) to specifications are made in this report without taking measurement uncertainty into account. Where statements of conformity are made in this report, the following decision rules are applied: PASS - Results within limits/specifications, FAIL - Results exceed limits/specifications.

**References:** limit of detection (LOD), limit of quantification (LOQ), not detected (ND), not tested (NT)

*Michael Pham*  
 All LQC samples were performed and met the prescribed acceptance criteria in 4 CCR section 1730, as attested by:  
 Michael Pham  
 Date: 05/11/2022

*Josh Wurzer*  
 Approved by: Josh Wurzer, President  
 Date: 05/11/2022



**CANNABINOID TEST RESULTS** - 05/10/2022 ✔ PASS

Tested by high-performance liquid chromatography with diode-array detection (HPLC-DAD). **Method:** QSP 1157 - Analysis of Cannabinoids by HPLC-DAD

**TOTAL CANNABINOIDS: 85.64%**

Total Cannabinoids (Total THC) + (Total CBD) + (Total CBG) + (Total THCV) + (Total CBC) + (Total CBDV) + Δ<sup>8</sup>-THC + CBL + CBN

**TOTAL THC: 82.546%**

Total THC (Δ<sup>8</sup>-THC+0.877\*THCa)

**TOTAL CBD: 0.173%**

Total CBD (CBD+0.877\*CBDA)

**TOTAL CBG: 2.117%**

Total CBG (CBG+0.877\*CBGa)

**TOTAL THCV: 0.36%**

Total THCV (THCV+0.877\*THCVa)

**TOTAL CBC: ND**

Total CBC (CBC+0.877\*CBCa)

**TOTAL CBDV: ND**

Total CBDV (CBDV+0.877\* CBDVa)

COMPOUND	LOD/LOQ (mg/g)	MEASUREMENT UNCERTAINTY (mg/g)	RESULT (mg/g)	RESULT (%)
Δ <sup>9</sup> -THC	0.06 / 0.26	±22.122	825.46	82.546
CBG	0.06 / 0.19	±0.650	21.17	2.117
THCV	0.1 / 0.2	±0.14	3.6	0.36
CBN	0.1 / 0.3	±0.12	2.3	0.23
Δ <sup>8</sup> -THC	0.1 / 0.4	±0.13	2.1	0.21
CBD	0.07 / 0.29	±0.062	1.73	0.173
THCa	0.05 / 0.14	N/A	ND	ND
THCVa	0.07 / 0.20	N/A	ND	ND
CBDA	0.02 / 0.19	N/A	ND	ND
CBDV	0.04 / 0.15	N/A	ND	ND
CBDVa	0.03 / 0.53	N/A	ND	ND
CBGa	0.1 / 0.2	N/A	ND	ND
CBL	0.06 / 0.24	N/A	ND	ND
CBC	0.2 / 0.5	N/A	ND	ND
CBCa	0.07 / 0.28	N/A	ND	ND
<b>SUM OF CANNABINOIDS</b>			856.4 mg/g	85.64%

**UNIT MASS: 1 grams per Unit**

Δ <sup>9</sup> -THC per Unit	1100 per-package limit	825.46 mg/unit	PASS
Total THC per Unit		825.46 mg/unit	
CBD per Unit		1.73 mg/unit	
Total CBD per Unit		1.73 mg/unit	
Sum of Cannabinoids per Unit		856.4 mg/unit	
Total Cannabinoids per Unit		856.4 mg/unit	

**TERPENOID TEST RESULTS** - 05/11/2022

Terpene analysis utilizing gas chromatography-flame ionization detection (GC-FID). **Method:** QSP 1192 - Analysis of Terpenoids by GC-FID

COMPOUND	LOD/LOQ (mg/g)	MEASUREMENT UNCERTAINTY (mg/g)	RESULT (mg/g)	RESULT (%)
Myrcene	0.008 / 0.025	±0.2142	21.418	2.1418
Limonene	0.005 / 0.016	±0.1624	14.634	1.4634
Terpinolene	0.008 / 0.026	±0.1222	7.683	0.7683
β-Caryophyllene	0.004 / 0.012	±0.1597	5.765	0.5765
β-Pinene	0.004 / 0.014	±0.0258	2.896	0.2896
α-Pinene	0.005 / 0.017	±0.0183	2.738	0.2738
β-Ocimene	0.006 / 0.020	±0.0638	2.550	0.2550
Linalool	0.009 / 0.032	±0.0659	2.228	0.2228
α-Humulene	0.009 / 0.029	±0.0335	1.339	0.1339
Terpineol	0.009 / 0.031	±0.0462	0.967	0.0967
Fenchol	0.010 / 0.034	±0.0280	0.930	0.0930
trans-β-Farnesene	0.008 / 0.025	±0.0117	0.424	0.0424
Camphene	0.005 / 0.015	±0.0026	0.291	0.0291
α-Phellandrene	0.006 / 0.020	±0.0025	0.239	0.0239
Δ <sup>3</sup> -Carene	0.005 / 0.018	±0.0024	0.215	0.0215
α-Terpinene	0.005 / 0.017	±0.0023	0.196	0.0196
Borneol	0.005 / 0.016	±0.0061	0.187	0.0187
α-Bisabolol	0.008 / 0.026	±0.0066	0.160	0.0160
γ-Terpinene	0.006 / 0.018	±0.0021	0.159	0.0159
Caryophyllene Oxide	0.010 / 0.033	±0.0043	0.119	0.0119
Fenchone	0.009 / 0.028	±0.0023	0.103	0.0103
p-Cymene	0.005 / 0.016	±0.0020	0.098	0.0098
Nerolidol	0.006 / 0.019	±0.0026	0.054	0.0054
Valencene	0.009 / 0.030	±0.0026	0.048	0.0048
Eucalyptol	0.006 / 0.018	±0.0007	0.038	0.0038
Guaiol	0.009 / 0.030	±0.0013	0.035	0.0035
Geraniol	0.002 / 0.007	±0.0011	0.033	0.0033
Citronellol	0.003 / 0.010	±0.0011	0.030	0.0030
Sabinene Hydrate	0.006 / 0.022	±0.0008	0.025	0.0025
Sabinene	0.004 / 0.014	±0.0002	0.024	0.0024
Nerol	0.003 / 0.011	±0.0005	0.014	0.0014
Isopulegol	0.005 / 0.016	N/A	ND	ND
Camphor	0.006 / 0.019	N/A	ND	ND
Isoborneol	0.004 / 0.012	N/A	ND	ND
Menthol	0.008 / 0.025	N/A	ND	ND
Pulegone	0.003 / 0.011	N/A	ND	ND
Geranyl Acetate	0.004 / 0.014	N/A	ND	ND
α-Cedrene	0.005 / 0.016	N/A	ND	ND
Cedrol	0.008 / 0.027	N/A	ND	ND
<b>TOTAL TERPENOIDS</b>			65.640 mg/g	6.564%