

**SAMPLE NAME: Melon Patch (0.33g)**

Concentrate, Product Inhalable

**CULTIVATOR / MANUFACTURER**

**Business Name:** Central Coast Ag Products, LLC

**License Number:** CDPH-10003156

**Address:** 1201 West Chestnut Ave. Lompoc CA 93436

**DISTRIBUTOR**

**Business Name:** CENTRAL COAST AG DISTRIBUTION, LLC

**License Number:** C11-0000496-LIC

**Address:** 1201 Chestnut St W Lompoc CA 93436



**SAMPLE DETAIL**

**Batch Number:** 220000203

**Sample ID:** 220228M008

**Source Metrc UID:**  
 1A4060300002EE1000027731

**Date Collected:** 02/28/2022

**Date Received:** 03/01/2022

**Batch Size:** 2035.0 units

**Sample Size:** 55.0 units

**Unit Mass:** 0.33 grams per Unit

**Serving Size:**



Scan QR code to verify authenticity of results.

**Sampling Method:** QSP 1265 - Sampling of Cannabis and Product Batches

**CANNABINOID ANALYSIS - SUMMARY **PASS****

**Sum of Cannabinoids: 86.72%**

**Total Cannabinoids: 86.72%**

**Total THC: 83.964%**

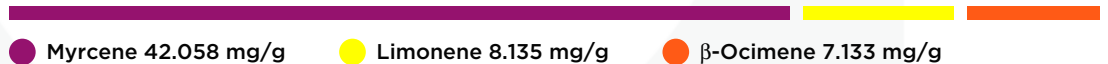
**Total CBD: 0.175%**

Sum of Cannabinoids =  $\Delta^9$ -THC + THCa + CBD + CBDa + CBG + CBGa + THCV + THCVa + CBC + CBCa + CBDV + CBDVa +  $\Delta^8$ -THC + CBL + CBN  
 Total Cannabinoids = ( $\Delta^9$ -THC+0.877\*THCa) + (CBD+0.877\*CBDa) + (CBG+0.877\*CBGa) + (THCV+0.877\*THCVa) + (CBC+0.877\*CBCa) + (CBDV+0.877\*CBDVa) +  $\Delta^8$ -THC + CBL + CBN  
 Total THC/CBD is calculated using the following formulas to take into account the loss of a carboxyl group during the decarboxylation step:  
 Total THC =  $\Delta^9$ -THC + (THCa (0.877))  
 Total CBD = CBD + (CBDa (0.877))

**TERPENOID ANALYSIS - SUMMARY**

39 TESTED, TOP 3 HIGHLIGHTED

**Total Terpenoids: 6.8864%**



**SAFETY ANALYSIS - SUMMARY**

**$\Delta^9$ -THC per Unit:** **PASS**

**Pesticides:** **PASS**

**Mycotoxins:** **PASS**

**Residual Solvents:** **PASS**

**Heavy Metals:** **PASS**

**Microbiology:** **PASS**

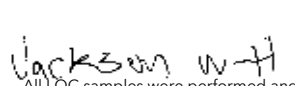
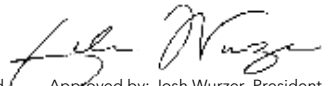
**Foreign Material:** **PASS**

These results relate only to the sample included on this report. This report shall not be reproduced, except in full, without written approval of the laboratory.

**Sample Certification:** California Code of Regulations Title 16 Effect Date January 16, 2019. Authority: Section 26013, Business and Professions Code. Reference: Sections 26100, 26104 and 26110, Business and Professions Code.

**Decision Rule:** Statements of conformity (e.g. Pass/Fail) to specifications are made in this report without taking measurement uncertainty into account. Where statements of conformity are made in this report, the following decision rules are applied: PASS - Results within limits/specifications, FAIL - Results exceed limits/specifications.

**References:** limit of detection (LOD), limit of quantification (LOQ), not detected (ND), not tested (NT)


  
 All LQC samples were performed and met the prescribed acceptance criteria in 4 CCR section 1730, as attested by: Jackson Waite-Himmelwright  
 Date: 03/03/2022  
 Approved by: Josh Wurzer, President  
 Date: 03/03/2022



**CANNABINOID TEST RESULTS** - 03/02/2022 ✔ PASS

Tested by high-performance liquid chromatography with diode-array detection (HPLC-DAD). **Method:** QSP 1157 - Analysis of Cannabinoids by HPLC-DAD

**TOTAL CANNABINOIDS: 86.72%**

Total Cannabinoids (Total THC) + (Total CBD) + (Total CBG) + (Total THCV) + (Total CBC) + (Total CBDV) + Δ<sup>8</sup>-THC + CBL + CBN

**TOTAL THC: 83.964%**

Total THC (Δ<sup>8</sup>-THC+0.877\*THCa)

**TOTAL CBD: 0.175%**

Total CBD (CBD+0.877\*CBDA)

**TOTAL CBG: 1.794%**

Total CBG (CBG+0.877\*CBGa)

**TOTAL THCV: 0.46%**

Total THCV (THCV+0.877\*THCVa)

**TOTAL CBC: ND**

Total CBC (CBC+0.877\*CBCa)

**TOTAL CBDV: ND**

Total CBDV (CBDV+0.877\*CBDVa)

COMPOUND	LOD/LOQ (mg/g)	MEASUREMENT UNCERTAINTY (mg/g)	RESULT (mg/g)	RESULT (%)
Δ <sup>9</sup> -THC	0.06 / 0.26	±22.502	839.64	83.964
CBG	0.06 / 0.19	±0.551	17.94	1.794
THCV	0.1 / 0.2	±0.18	4.6	0.46
CBN	0.1 / 0.3	±0.12	2.3	0.23
CBD	0.07 / 0.29	±0.063	1.75	0.175
Δ <sup>8</sup> -THC	0.1 / 0.4	±0.06	1.0	0.10
THCa	0.05 / 0.14	N/A	ND	ND
THCVa	0.07 / 0.20	N/A	ND	ND
CBDA	0.02 / 0.19	N/A	ND	ND
CBDV	0.04 / 0.15	N/A	ND	ND
CBDVa	0.03 / 0.53	N/A	ND	ND
CBGa	0.1 / 0.2	N/A	ND	ND
CBL	0.06 / 0.24	N/A	ND	ND
CBC	0.2 / 0.5	N/A	ND	ND
CBCa	0.07 / 0.28	N/A	ND	ND
<b>SUM OF CANNABINOIDS</b>			<b>867.2 mg/g</b>	<b>86.72%</b>

**UNIT MASS: 0.33 grams per Unit**

Δ <sup>9</sup> -THC per Unit	1100 per-package limit	277.08 mg/unit	PASS
Total THC per Unit		277.08 mg/unit	
CBD per Unit		0.58 mg/unit	
Total CBD per Unit		0.58 mg/unit	
Sum of Cannabinoids per Unit		286.2 mg/unit	
Total Cannabinoids per Unit		286.2 mg/unit	

**TERPENOID TEST RESULTS** - 03/02/2022

Terpene analysis utilizing gas chromatography-flame ionization detection (GC-FID). **Method:** QSP 1192 - Analysis of Terpenoids by GC-FID

COMPOUND	LOD/LOQ (mg/g)	MEASUREMENT UNCERTAINTY (mg/g)	RESULT (mg/g)	RESULT (%)
Myrcene	0.008 / 0.025	±0.4206	42.058	4.2058
Limonene	0.005 / 0.016	±0.0903	8.135	0.8135
β-Ocimene	0.006 / 0.020	±0.1783	7.133	0.7133
β-Caryophyllene	0.004 / 0.012	±0.0652	2.352	0.2352
α-Pinene	0.005 / 0.017	±0.0149	2.217	0.2217
β-Pinene	0.004 / 0.014	±0.0184	2.072	0.2072
Linalool	0.009 / 0.032	±0.0435	1.471	0.1471
Terpinolene	0.008 / 0.026	±0.0159	1.002	0.1002
α-Humulene	0.009 / 0.029	±0.0164	0.657	0.0657
Fenchol	0.010 / 0.034	±0.0087	0.288	0.0288
Terpineol	0.009 / 0.031	±0.0125	0.262	0.0262
trans-β-Farnesene	0.008 / 0.025	±0.0064	0.231	0.0231
Camphene	0.005 / 0.015	±0.0018	0.197	0.0197
Guaiol	0.009 / 0.030	±0.0061	0.167	0.0167
α-Bisabolol	0.008 / 0.026	±0.0053	0.127	0.0127
Nerolidol	0.006 / 0.019	±0.0047	0.096	0.0096
Borneol	0.005 / 0.016	±0.0030	0.093	0.0093
Fenchone	0.009 / 0.028	±0.0016	0.069	0.0069
Valencene	0.009 / 0.030	±0.0037	0.069	0.0069
α-Phellandrene	0.006 / 0.020	±0.0004	0.038	0.0038
Citronellol	0.003 / 0.010	±0.0014	0.037	0.0037
α-Terpinene	0.005 / 0.017	±0.0004	0.036	0.0036
γ-Terpinene	0.006 / 0.018	±0.0004	0.031	0.0031
Δ <sup>3</sup> -Carene	0.005 / 0.018	±0.0003	0.026	0.0026
Caryophyllene Oxide	0.010 / 0.033	N/A	<LOQ	<LOQ
Sabinene	0.004 / 0.014	N/A	ND	ND
p-Cymene	0.005 / 0.016	N/A	ND	ND
Eucalyptol	0.006 / 0.018	N/A	ND	ND
Sabinene Hydrate	0.006 / 0.022	N/A	ND	ND
Isopulegol	0.005 / 0.016	N/A	ND	ND
Camphor	0.006 / 0.019	N/A	ND	ND
Isoborneol	0.004 / 0.012	N/A	ND	ND
Menthol	0.008 / 0.025	N/A	ND	ND
Nerol	0.003 / 0.011	N/A	ND	ND
Pulegone	0.003 / 0.011	N/A	ND	ND
Geraniol	0.002 / 0.007	N/A	ND	ND
Geranyl Acetate	0.004 / 0.014	N/A	ND	ND
α-Cedrene	0.005 / 0.016	N/A	ND	ND
Cedrol	0.008 / 0.027	N/A	ND	ND
<b>TOTAL TERPENOIDS</b>			<b>68.864 mg/g</b>	<b>6.8864%</b>