

**SAMPLE NAME: Animas Lime (1g)**

Concentrate, Product Inhalable

**CULTIVATOR / MANUFACTURER**

**Business Name:** Central Coast Ag Products, LLC

**License Number:** CDPH-10003156

**Address:** 1201 West Chestnut Ave. Lompoc CA 93436

**DISTRIBUTOR**

**Business Name:** CENTRAL COAST AG DISTRIBUTION, LLC

**License Number:** C11-0000496-LIC

**Address:** 1201 Chestnut St W Lompoc CA 93436



**SAMPLE DETAIL**

**Batch Number:** 220000843

**Sample ID:** 220713M009

**Source Metrc UID:**  
 1A4060300002EE1000036030

**Date Collected:** 07/13/2022

**Date Received:** 07/14/2022

**Batch Size:** 2316.0 units

**Sample Size:** 20.0 units

**Unit Mass:** 1 grams per Unit

**Serving Size:**



Scan QR code to verify authenticity of results.

**Sampling Method:** QSP 1265 - Sampling of Cannabis and Product Batches

**CANNABINOID ANALYSIS - SUMMARY **PASS****

**Sum of Cannabinoids: 92.57%**

**Total Cannabinoids: 92.57%**

**Total THC: 88.71%**

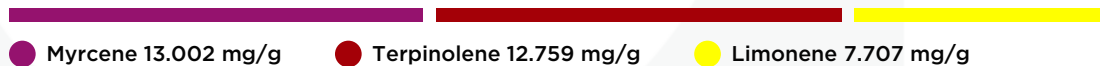
**Total CBD: 0.146%**

Sum of Cannabinoids =  $\Delta^9$ -THC + THCa + CBD + CBDa + CBG + CBGa + THCV + THCVa + CBC + CBCa + CBDV + CBDVa +  $\Delta^8$ -THC + CBL + CBN  
 Total Cannabinoids = ( $\Delta^9$ -THC+0.877\*THCa) + (CBD+0.877\*CBDa) + (CBG+0.877\*CBGa) + (THCV+0.877\*THCVa) + (CBC+0.877\*CBCa) + (CBDV+0.877\*CBDVa) +  $\Delta^8$ -THC + CBL + CBN  
 Total THC/CBD is calculated using the following formulas to take into account the loss of a carboxyl group during the decarboxylation step:  
 Total THC =  $\Delta^9$ -THC + (THCa (0.877))  
 Total CBD = CBD + (CBDa (0.877))

**TERPENOID ANALYSIS - SUMMARY**

39 TESTED, TOP 3 HIGHLIGHTED

**Total Terpenoids: 5.5387%**



**SAFETY ANALYSIS - SUMMARY**

**$\Delta^9$ -THC per Unit: **PASS****

**Pesticides: **PASS****

**Mycotoxins: **PASS****

**Residual Solvents: **PASS****

**Heavy Metals: **PASS****

**Microbiology: **PASS****

**Foreign Material: **PASS****

These results relate only to the sample included on this report. This report shall not be reproduced, except in full, without written approval of the laboratory.

**Sample Certification:** California Code of Regulations Title 16 Effect Date January 16, 2019. Authority: Section 26013, Business and Professions Code. Reference: Sections 26100, 26104 and 26110, Business and Professions Code.

**Decision Rule:** Statements of conformity (e.g. Pass/Fail) to specifications are made in this report without taking measurement uncertainty into account. Where statements of conformity are made in this report, the following decision rules are applied: PASS - Results within limits/specifications, FAIL - Results exceed limits/specifications.

**References:** limit of detection (LOD), limit of quantification (LOQ), not detected (ND), not tested (NT)

*Michael Pham*  
 All LQC samples were performed and met the prescribed acceptance criteria in 4 CCR section 1730, as attested by:  
 Michael Pham  
 Date: 07/15/2022

*Josh Wurzer*  
 Approved by: Josh Wurzer, President  
 Date: 07/15/2022



**CANNABINOID TEST RESULTS** - 07/14/2022 ✔ PASS

Tested by high-performance liquid chromatography with diode-array detection (HPLC-DAD). **Method:** QSP 1157 - Analysis of Cannabinoids by HPLC-DAD

**TOTAL CANNABINOIDS: 92.57%**

Total Cannabinoids (Total THC) + (Total CBD) + (Total CBG) + (Total THCV) + (Total CBC) + (Total CBDV) + Δ<sup>8</sup>-THC + CBL + CBN

**TOTAL THC: 88.71%**

Total THC (Δ<sup>8</sup>-THC+0.877\*THCa)

**TOTAL CBD: 0.146%**

Total CBD (CBD+0.877\*CBDA)

**TOTAL CBG: 2.663%**

Total CBG (CBG+0.877\*CBGa)

**TOTAL THCV: 0.81%**

Total THCV (THCV+0.877\*THCVa)

**TOTAL CBC: ND**

Total CBC (CBC+0.877\*CBCa)

**TOTAL CBDV: ND**

Total CBDV (CBDV+0.877\*CBDVa)

COMPOUND	LOD/LOQ (mg/g)	MEASUREMENT UNCERTAINTY (mg/g)	RESULT (mg/g)	RESULT (%)
Δ <sup>9</sup> -THC	0.06 / 0.26	±23.774	887.10	88.710
CBG	0.06 / 0.19	±0.818	26.63	2.663
THCV	0.1 / 0.2	±0.31	8.1	0.81
CBN	0.1 / 0.3	±0.12	2.4	0.24
CBD	0.07 / 0.29	±0.053	1.46	0.146
Δ <sup>8</sup> -THC	0.1 / 0.4	N/A	ND	ND
THCa	0.05 / 0.14	N/A	ND	ND
THCVa	0.07 / 0.20	N/A	ND	ND
CBDA	0.02 / 0.19	N/A	ND	ND
CBDV	0.04 / 0.15	N/A	ND	ND
CBDVa	0.03 / 0.53	N/A	ND	ND
CBGa	0.1 / 0.2	N/A	ND	ND
CBL	0.06 / 0.24	N/A	ND	ND
CBC	0.2 / 0.5	N/A	ND	ND
CBCa	0.07 / 0.28	N/A	ND	ND
<b>SUM OF CANNABINOIDS</b>			925.7 mg/g	92.57%

**UNIT MASS: 1 grams per Unit**

Δ <sup>9</sup> -THC per Unit	1100 per-package limit	887.10 mg/unit	PASS
Total THC per Unit		887.10 mg/unit	
CBD per Unit		1.46 mg/unit	
Total CBD per Unit		1.46 mg/unit	
Sum of Cannabinoids per Unit		925.7 mg/unit	
Total Cannabinoids per Unit		925.7 mg/unit	

**TERPENOID TEST RESULTS** - 07/15/2022

Terpene analysis utilizing gas chromatography-flame ionization detection (GC-FID). **Method:** QSP 1192 - Analysis of Terpenoids by GC-FID

COMPOUND	LOD/LOQ (mg/g)	MEASUREMENT UNCERTAINTY (mg/g)	RESULT (mg/g)	RESULT (%)
Myrcene	0.008 / 0.025	±0.1300	13.002	1.3002
Terpinolene	0.008 / 0.026	±0.2029	12.759	1.2759
Limonene	0.005 / 0.016	±0.0855	7.707	0.7707
β-Ocimene	0.006 / 0.020	±0.1354	5.416	0.5416
β-Caryophyllene	0.004 / 0.012	±0.0983	3.547	0.3547
α-Pinene	0.005 / 0.017	±0.0208	3.105	0.3105
β-Pinene	0.004 / 0.014	±0.0262	2.939	0.2939
Linalool	0.009 / 0.032	±0.0297	1.004	0.1004
α-Humulene	0.009 / 0.029	±0.0234	0.935	0.0935
trans-β-Farnesene	0.008 / 0.025	±0.0189	0.686	0.0686
α-Phellandrene	0.006 / 0.020	±0.0054	0.514	0.0514
Fenchol	0.010 / 0.034	±0.0148	0.491	0.0491
Terpineol	0.009 / 0.031	±0.0234	0.490	0.0490
Δ <sup>3</sup> -Carene	0.005 / 0.018	±0.0052	0.471	0.0471
α-Terpinene	0.005 / 0.017	±0.0050	0.427	0.0427
γ-Terpinene	0.006 / 0.018	±0.0047	0.350	0.0350
α-Bisabolol	0.008 / 0.026	±0.0129	0.312	0.0312
Guaiol	0.009 / 0.030	±0.0084	0.230	0.0230
Camphene	0.005 / 0.015	±0.0017	0.185	0.0185
Borneol	0.005 / 0.016	±0.0038	0.116	0.0116
α-Cedrene	0.005 / 0.016	±0.0026	0.110	0.0110
p-Cymene	0.005 / 0.016	±0.0022	0.104	0.0104
Valencene	0.009 / 0.030	±0.0056	0.104	0.0104
Nerolidol	0.006 / 0.019	±0.0046	0.093	0.0093
Fenchone	0.009 / 0.028	±0.0019	0.086	0.0086
Sabinene	0.004 / 0.014	±0.0007	0.071	0.0071
Eucalyptol	0.006 / 0.018	±0.0011	0.057	0.0057
Sabinene Hydrate	0.006 / 0.022	±0.0012	0.040	0.0040
Caryophyllene Oxide	0.010 / 0.033	±0.0013	0.036	0.0036
Geraniol	0.002 / 0.007	N/A	<LOQ	<LOQ
Isopulegol	0.005 / 0.016	N/A	ND	ND
Camphor	0.006 / 0.019	N/A	ND	ND
Isoborneol	0.004 / 0.012	N/A	ND	ND
Menthol	0.008 / 0.025	N/A	ND	ND
Nerol	0.003 / 0.011	N/A	ND	ND
Citronellol	0.003 / 0.010	N/A	ND	ND
Pulegone	0.003 / 0.011	N/A	ND	ND
Geranyl Acetate	0.004 / 0.014	N/A	ND	ND
Cedrol	0.008 / 0.027	N/A	ND	ND
<b>TOTAL TERPENOIDS</b>			55.387 mg/g	5.5387%