

**SAMPLE NAME: Abracadabra (0.33g)**

Concentrate, Product Inhalable

**CULTIVATOR / MANUFACTURER**

**Business Name:** Central Coast Ag Products, LLC

**License Number:** CDPH-10003156

**Address:** 1201 West Chestnut Ave. Lompoc CA 93436

**DISTRIBUTOR**

**Business Name:** CENTRAL COAST AG DISTRIBUTION, LLC

**License Number:** C11-0000496-LIC

**Address:** 1201 Chestnut St W Lompoc CA 93436



**SAMPLE DETAIL**

**Batch Number:** 220000801

**Sample ID:** 220726N001

**Source Metrc UID:**  
1A4060300002EE1000035353

**Date Collected:** 07/26/2022

**Date Received:** 07/27/2022

**Batch Size:** 982.0 units

**Sample Size:** 55.0 units

**Unit Mass:** 0.33 grams per Unit

**Serving Size:**



Scan QR code to verify authenticity of results.

**Sampling Method:** QSP 1265 - Sampling of Cannabis and Product Batches

**CANNABINOID ANALYSIS - SUMMARY** ✔ PASS

**Sum of Cannabinoids: 90.93%**

**Total Cannabinoids: 90.93%**

**Total THC: 85.416%**

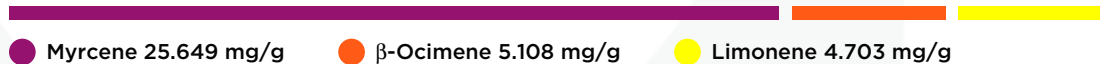
**Total CBD: 0.132%**

Sum of Cannabinoids =  $\Delta^9$ -THC + THCa + CBD + CBDa + CBG + CBGa + THCV + THCVa + CBC + CBCa + CBDV + CBDVa +  $\Delta^8$ -THC + CBL + CBN  
 Total Cannabinoids = ( $\Delta^9$ -THC + 0.877\*THCa) + (CBD + 0.877\*CBDa) + (CBG + 0.877\*CBGa) + (THCV + 0.877\*THCVa) + (CBC + 0.877\*CBCa) + (CBDV + 0.877\*CBDVa) +  $\Delta^8$ -THC + CBL + CBN  
 Total THC/CBD is calculated using the following formulas to take into account the loss of a carboxyl group during the decarboxylation step:  
 Total THC =  $\Delta^9$ -THC + (THCa (0.877))  
 Total CBD = CBD + (CBDa (0.877))

**TERPENOID ANALYSIS - SUMMARY**

39 TESTED, TOP 3 HIGHLIGHTED

**Total Terpenoids: 4.6221%**



**SAFETY ANALYSIS - SUMMARY**

$\Delta^9$ -THC per Unit: ✔ PASS

Pesticides: ✔ PASS

Mycotoxins: ✔ PASS

Residual Solvents: ✔ PASS

Heavy Metals: ✔ PASS

Microbiology: ✔ PASS

Foreign Material: ✔ PASS

These results relate only to the sample included on this report. This report shall not be reproduced, except in full, without written approval of the laboratory.

**Sample Certification:** California Code of Regulations Title 16 Effect Date January 16, 2019. Authority: Section 26013, Business and Professions Code. Reference: Sections 26100, 26104 and 26110, Business and Professions Code.

**Decision Rule:** Statements of conformity (e.g. Pass/Fail) to specifications are made in this report without taking measurement uncertainty into account. Where statements of conformity are made in this report, the following decision rules are applied: PASS - Results within limits/specifications, FAIL - Results exceed limits/specifications.

**References:** limit of detection (LOD), limit of quantification (LOQ), not detected (ND), not tested (NT)

*Callie Stone*      *Josh Wurzer*  
 All LQC samples were performed and met the prescribed acceptance criteria in 4 CCR section 1730, as attested by:  
 Callie Stone      Approved by: Josh Wurzer, President  
 Date: 07/28/2022      Date: 07/28/2022  
 Date: 07/28/2022



**CANNABINOID TEST RESULTS** - 07/27/2022 ✔ PASS

Tested by high-performance liquid chromatography with diode-array detection (HPLC-DAD). **Method:** QSP 1157 - Analysis of Cannabinoids by HPLC-DAD

**TOTAL CANNABINOIDS: 90.93%**

Total Cannabinoids (Total THC) + (Total CBD) + (Total CBG) + (Total THCV) + (Total CBC) + (Total CBDV) + Δ<sup>8</sup>-THC + CBL + CBN

**TOTAL THC: 85.416%**

Total THC (Δ<sup>8</sup>-THC+0.877\*THCa)

**TOTAL CBD: 0.132%**

Total CBD (CBD+0.877\*CBDA)

**TOTAL CBG: 3.369%**

Total CBG (CBG+0.877\*CBGa)

**TOTAL THCV: 1.68%**

Total THCV (THCV+0.877\*THCVa)

**TOTAL CBC: ND**

Total CBC (CBC+0.877\*CBCa)

**TOTAL CBDV: ND**

Total CBDV (CBDV+0.877\* CBDVa)

COMPOUND	LOD/LOQ (mg/g)	MEASUREMENT UNCERTAINTY (mg/g)	RESULT (mg/g)	RESULT (%)
Δ <sup>9</sup> -THC	0.06 / 0.26	±22.891	854.16	85.416
CBG	0.06 / 0.19	±1.034	33.69	3.369
THCV	0.1 / 0.2	±0.65	16.8	1.68
CBN	0.1 / 0.3	±0.17	3.3	0.33
CBD	0.07 / 0.29	±0.048	1.32	0.132
Δ <sup>8</sup> -THC	0.1 / 0.4	N/A	ND	ND
THCa	0.05 / 0.14	N/A	ND	ND
THCVa	0.07 / 0.20	N/A	ND	ND
CBDA	0.02 / 0.19	N/A	ND	ND
CBDV	0.04 / 0.15	N/A	ND	ND
CBDVa	0.03 / 0.53	N/A	ND	ND
CBGa	0.1 / 0.2	N/A	ND	ND
CBL	0.06 / 0.24	N/A	ND	ND
CBC	0.2 / 0.5	N/A	ND	ND
CBCa	0.07 / 0.28	N/A	ND	ND
<b>SUM OF CANNABINOIDS</b>			<b>909.3 mg/g</b>	<b>90.93%</b>

**UNIT MASS: 0.33 grams per Unit**

Δ <sup>9</sup> -THC per Unit	1100 per-package limit	281.87 mg/unit	PASS
Total THC per Unit		281.87 mg/unit	
CBD per Unit		0.44 mg/unit	
Total CBD per Unit		0.44 mg/unit	
Sum of Cannabinoids per Unit		300.1 mg/unit	
Total Cannabinoids per Unit		300.0 mg/unit	

**TERPENOID TEST RESULTS** - 07/28/2022

Terpene analysis utilizing gas chromatography-flame ionization detection (GC-FID). **Method:** QSP 1192 - Analysis of Terpenoids by GC-FID

COMPOUND	LOD/LOQ (mg/g)	MEASUREMENT UNCERTAINTY (mg/g)	RESULT (mg/g)	RESULT (%)
Myrcene	0.008 / 0.025	±0.2565	25.649	2.5649
β-Ocimene	0.006 / 0.020	±0.1277	5.108	0.5108
Limonene	0.005 / 0.016	±0.0522	4.703	0.4703
β-Caryophyllene	0.004 / 0.012	±0.0932	3.365	0.3365
α-Pinene	0.005 / 0.017	±0.0131	1.956	0.1956
β-Pinene	0.004 / 0.014	±0.0134	1.505	0.1505
Terpinolene	0.008 / 0.026	±0.0193	1.211	0.1211
α-Humulene	0.009 / 0.029	±0.0206	0.822	0.0822
Linalool	0.009 / 0.032	±0.0209	0.705	0.0705
Fenchol	0.010 / 0.034	±0.0089	0.297	0.0297
Terpineol	0.009 / 0.031	±0.0082	0.172	0.0172
Camphene	0.005 / 0.015	±0.0011	0.121	0.0121
trans-β-Farnesene	0.008 / 0.025	±0.0029	0.106	0.0106
Valencene	0.009 / 0.030	±0.0047	0.088	0.0088
Caryophyllene Oxide	0.010 / 0.033	±0.0025	0.071	0.0071
Borneol	0.005 / 0.016	±0.0020	0.062	0.0062
α-Bisabolol	0.008 / 0.026	±0.0022	0.054	0.0054
Δ <sup>3</sup> -Carene	0.005 / 0.018	±0.0006	0.050	0.0050
α-Phellandrene	0.006 / 0.020	±0.0005	0.048	0.0048
Nerolidol	0.006 / 0.019	±0.0020	0.041	0.0041
α-Terpinene	0.005 / 0.017	±0.0005	0.039	0.0039
γ-Terpinene	0.006 / 0.018	±0.0005	0.034	0.0034
Geraniol	0.002 / 0.007	±0.0005	0.014	0.0014
Sabinene	0.004 / 0.014	N/A	<LOQ	<LOQ
p-Cymene	0.005 / 0.016	N/A	<LOQ	<LOQ
Eucalyptol	0.006 / 0.018	N/A	<LOQ	<LOQ
Sabinene Hydrate	0.006 / 0.022	N/A	<LOQ	<LOQ
Fenchone	0.009 / 0.028	N/A	<LOQ	<LOQ
Nerol	0.003 / 0.011	N/A	<LOQ	<LOQ
Citronellol	0.003 / 0.010	N/A	<LOQ	<LOQ
Isopulegol	0.005 / 0.016	N/A	ND	ND
Camphor	0.006 / 0.019	N/A	ND	ND
Isoborneol	0.004 / 0.012	N/A	ND	ND
Menthol	0.008 / 0.025	N/A	ND	ND
Pulegone	0.003 / 0.011	N/A	ND	ND
Geranyl Acetate	0.004 / 0.014	N/A	ND	ND
α-Cedrene	0.005 / 0.016	N/A	ND	ND
Guaiol	0.009 / 0.030	N/A	ND	ND
Cedrol	0.008 / 0.027	N/A	ND	ND
<b>TOTAL TERPENOIDS</b>			<b>46.221 mg/g</b>	<b>4.6221%</b>