

**SAMPLE NAME: Sour Orange Margarita (0.33g)**

Concentrate, Product Inhalable

**CULTIVATOR / MANUFACTURER**

**Business Name:** Central Coast Ag Products, LLC

**License Number:** CDPH-10003156

**Address:** 1201 West Chestnut Ave. Lompoc CA 93436

**DISTRIBUTOR**

**Business Name:** CENTRAL COAST AG DISTRIBUTION, LLC

**License Number:** C11-0000496-LIC

**Address:** 1201 Chestnut St W Lompoc CA 93436



**SAMPLE DETAIL**

**Batch Number:** 220000765

**Sample ID:** 220621N017

**Source Metrc UID:**  
 1A4060300002EE1000035223

**Date Collected:** 06/21/2022

**Date Received:** 06/21/2022

**Batch Size:** 3557.0 units

**Sample Size:** 55.0 units

**Unit Mass:** 0.33 grams per Unit

**Serving Size:**



Scan QR code to verify authenticity of results.

**Sampling Method:** QSP 1265 - Sampling of Cannabis and Product Batches

**CANNABINOID ANALYSIS - SUMMARY ✔ PASS**

**Sum of Cannabinoids: 94.26%**

Sum of Cannabinoids =  $\Delta^9$ -THC + THCa + CBD + CBDa + CBG + CBGa + THCV + THCVa + CBC + CBCa + CBDV + CBDVa +  $\Delta^8$ -THC + CBL + CBN  
 Total Cannabinoids =  $(\Delta^9$ -THC + 0.877\*THCa) + (CBD + 0.877\*CBDa) + (CBG + 0.877\*CBGa) + (THCV + 0.877\*THCVa) + (CBC + 0.877\*CBCa) + (CBDV + 0.877\*CBDVa) +  $\Delta^8$ -THC + CBL + CBN

**Total Cannabinoids: 94.3%**

**Total THC: 85.506%**

Total THC/CBD is calculated using the following formulas to take into account the loss of a carboxyl group during the decarboxylation step:

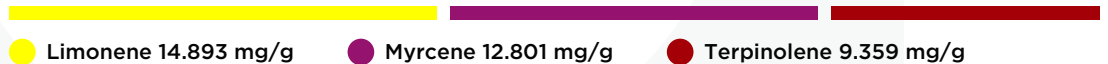
**Total CBD: 0.121%**

Total THC =  $\Delta^9$ -THC + (THCa (0.877))  
 Total CBD = CBD + (CBDa (0.877))

**TERPENOID ANALYSIS - SUMMARY**

39 TESTED, TOP 3 HIGHLIGHTED

**Total Terpenoids: 5.4936%**



**SAFETY ANALYSIS - SUMMARY**

**$\Delta^9$ -THC per Unit: ✔ PASS**

**Pesticides: ✔ PASS**

**Mycotoxins: ✔ PASS**

**Residual Solvents: ✔ PASS**

**Heavy Metals: ✔ PASS**

**Microbiology: ✔ PASS**

**Foreign Material: ✔ PASS**

These results relate only to the sample included on this report. This report shall not be reproduced, except in full, without written approval of the laboratory.

**Sample Certification:** California Code of Regulations Title 16 Effect Date January 16, 2019. Authority: Section 26013, Business and Professions Code. Reference: Sections 26100, 26104 and 26110, Business and Professions Code.

**Decision Rule:** Statements of conformity (e.g. Pass/Fail) to specifications are made in this report without taking measurement uncertainty into account. Where statements of conformity are made in this report, the following decision rules are applied: PASS - Results within limits/specifications, FAIL - Results exceed limits/specifications.

**References:** limit of detection (LOD), limit of quantification (LOQ), not detected (ND), not tested (NT)

*Carmen Stackhouse* *Josh Wurzer*  
 All LQC samples were performed and met the prescribed acceptance criteria in 4 CCR section 1730, as attested by:  
 Carmen Stackhouse  
 Date: 06/23/2022  
 Approved by: Josh Wurzer, President  
 Date: 06/23/2022



**CANNABINOID TEST RESULTS** - 06/23/2022 ✔ PASS

Tested by high-performance liquid chromatography with diode-array detection (HPLC-DAD). **Method:** QSP 1157 - Analysis of Cannabinoids by HPLC-DAD

**TOTAL CANNABINOIDS: 94.3%**

Total Cannabinoids (Total THC) + (Total CBD) + (Total CBG) + (Total THCV) + (Total CBC) + (Total CBDV) + Δ<sup>8</sup>-THC + CBL + CBN

**TOTAL THC: 85.506%**

Total THC (Δ<sup>9</sup>-THC+0.877\*THCa)

**TOTAL CBD: 0.121%**

Total CBD (CBD+0.877\*CBDA)

**TOTAL CBG: 4.183%**

Total CBG (CBG+0.877\*CBGa)

**TOTAL THCV: 4.08%**

Total THCV (THCV+0.877\*THCVa)

**TOTAL CBC: 0.3%**

Total CBC (CBC+0.877\*CBCa)

**TOTAL CBDV: ND**

Total CBDV (CBDV+0.877\*CBDA)

COMPOUND	LOD/LOQ (mg/g)	MEASUREMENT UNCERTAINTY (mg/g)	RESULT (mg/g)	RESULT (%)
Δ <sup>9</sup> -THC	0.06 / 0.26	±22.916	855.06	85.506
CBG	0.06 / 0.19	±1.284	41.83	4.183
THCV	0.1 / 0.2	±1.58	40.8	4.08
CBC	0.2 / 0.5	±0.07	3.0	0.30
CBD	0.07 / 0.29	±0.044	1.21	0.121
CBN	0.1 / 0.3	±0.04	0.7	0.07
Δ <sup>8</sup> -THC	0.1 / 0.4	N/A	ND	ND
THCa	0.05 / 0.14	N/A	ND	ND
THCVa	0.07 / 0.20	N/A	ND	ND
CBDA	0.02 / 0.19	N/A	ND	ND
CBDV	0.04 / 0.15	N/A	ND	ND
CBDVa	0.03 / 0.53	N/A	ND	ND
CBGa	0.1 / 0.2	N/A	ND	ND
CBL	0.06 / 0.24	N/A	ND	ND
CBCa	0.07 / 0.28	N/A	ND	ND
<b>SUM OF CANNABINOIDS</b>			<b>942.6 mg/g</b>	<b>94.26%</b>

**UNIT MASS: 0.33 grams per Unit**

Δ <sup>9</sup> -THC per Unit	1100 per-package limit	282.17 mg/unit	PASS
Total THC per Unit		282.17 mg/unit	
CBD per Unit		0.40 mg/unit	
Total CBD per Unit		0.40 mg/unit	
Sum of Cannabinoids per Unit		311.1 mg/unit	
Total Cannabinoids per Unit		311.1 mg/unit	

**TERPENOID TEST RESULTS** - 06/23/2022

Terpene analysis utilizing gas chromatography-flame ionization detection (GC-FID). **Method:** QSP 1192 - Analysis of Terpenoids by GC-FID

COMPOUND	LOD/LOQ (mg/g)	MEASUREMENT UNCERTAINTY (mg/g)	RESULT (mg/g)	RESULT (%)
Limonene	0.005 / 0.016	±0.1653	14.893	1.4893
Myrcene	0.008 / 0.025	±0.1280	12.801	1.2801
Terpinolene	0.008 / 0.026	±0.1488	9.359	0.9359
α-Pinene	0.005 / 0.017	±0.0304	4.543	0.4543
β-Pinene	0.004 / 0.014	±0.0341	3.835	0.3835
β-Caryophyllene	0.004 / 0.012	±0.0718	2.592	0.2592
β-Ocimene	0.006 / 0.020	±0.0552	2.210	0.2210
Linalool	0.009 / 0.032	±0.0272	0.918	0.0918
α-Humulene	0.009 / 0.029	±0.0147	0.587	0.0587
Fenchol	0.010 / 0.034	±0.0144	0.478	0.0478
α-Phellandrene	0.006 / 0.020	±0.0036	0.340	0.0340
Terpineol	0.009 / 0.031	±0.0152	0.319	0.0319
Camphene	0.005 / 0.015	±0.0029	0.317	0.0317
α-Terpinene	0.005 / 0.017	±0.0032	0.280	0.0280
Δ <sup>3</sup> -Carene	0.005 / 0.018	±0.0030	0.272	0.0272
Valencene	0.009 / 0.030	±0.0141	0.263	0.0263
γ-Terpinene	0.006 / 0.018	±0.0024	0.180	0.0180
trans-β-Farnesene	0.008 / 0.025	±0.0045	0.163	0.0163
Guaiol	0.009 / 0.030	±0.0036	0.097	0.0097
α-Bisabolol	0.008 / 0.026	±0.0040	0.096	0.0096
Borneol	0.005 / 0.016	±0.0029	0.089	0.0089
Caryophyllene Oxide	0.010 / 0.033	±0.0029	0.082	0.0082
Fenchone	0.009 / 0.028	±0.0014	0.063	0.0063
p-Cymene	0.005 / 0.016	±0.0009	0.041	0.0041
Nerolidol	0.006 / 0.019	±0.0018	0.036	0.0036
Eucalyptol	0.006 / 0.018	±0.0007	0.033	0.0033
Citronellol	0.003 / 0.010	±0.0010	0.025	0.0025
Sabinene	0.004 / 0.014	±0.0002	0.024	0.0024
Sabinene Hydrate	0.006 / 0.022	N/A	<LOQ	<LOQ
Geranyl Acetate	0.004 / 0.014	N/A	<LOQ	<LOQ
Isopulegol	0.005 / 0.016	N/A	ND	ND
Camphor	0.006 / 0.019	N/A	ND	ND
Isoborneol	0.004 / 0.012	N/A	ND	ND
Menthol	0.008 / 0.025	N/A	ND	ND
Nerol	0.003 / 0.011	N/A	ND	ND
Pulegone	0.003 / 0.011	N/A	ND	ND
Geraniol	0.002 / 0.007	N/A	ND	ND
α-Cedrene	0.005 / 0.016	N/A	ND	ND
Cedrol	0.008 / 0.027	N/A	ND	ND
<b>TOTAL TERPENOIDS</b>			<b>54.936 mg/g</b>	<b>5.4936%</b>