

**SAMPLE NAME: Lemonberry Breeze (CBD 1:1)**

Concentrate, Product Inhalable

**CULTIVATOR / MANUFACTURER**

**Business Name:** Central Coast Ag Products, LLC

**License Number:** CDPH-10003156

**Address:** 1201 West Chestnut Ave. Lompoc CA 93436

**DISTRIBUTOR**

**Business Name:** CENTRAL COAST AG DISTRIBUTION, LLC

**License Number:** C11-0000496-LIC

**Address:** 1201 Chestnut St W Lompoc CA 93436



**SAMPLE DETAIL**

**Batch Number:** 220000645

**Sample ID:** 220523L007

**Source Metrc UID:**  
1A4060300002EE1000033508

**Date Collected:** 05/23/2022

**Date Received:** 05/24/2022

**Batch Size:** 1454.0 units

**Sample Size:** 20.0 units

**Unit Mass:** 1 grams per Unit

**Serving Size:**



Scan QR code to verify authenticity of results.

**Sampling Method:** QSP 1265 - Sampling of Cannabis and Product Batches

**CANNABINOID ANALYSIS - SUMMARY ✔ PASS**

**Sum of Cannabinoids: 84.78%**

**Total Cannabinoids: 84.8%**

**Total THC: 40.731%**

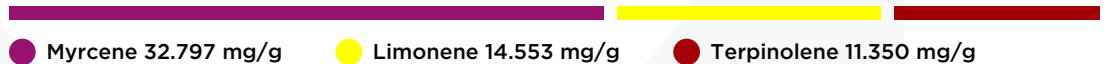
**Total CBD: 40.171%**

Sum of Cannabinoids =  $\Delta^9$ -THC + THCa + CBD + CBDa + CBG + CBGa + THCV + THCVa + CBC + CBCa + CBDV + CBDVa +  $\Delta^8$ -THC + CBL + CBN  
 Total Cannabinoids =  $(\Delta^9$ -THC + 0.877\*THCa) + (CBD + 0.877\*CBDa) + (CBG + 0.877\*CBGa) + (THCV + 0.877\*THCVa) + (CBC + 0.877\*CBCa) + (CBDV + 0.877\*CBDVa) +  $\Delta^8$ -THC + CBL + CBN  
 Total THC/CBD is calculated using the following formulas to take into account the loss of a carboxyl group during the decarboxylation step:  
 Total THC =  $\Delta^9$ -THC + (THCa (0.877))  
 Total CBD = CBD + (CBDa (0.877))

**TERPENOID ANALYSIS - SUMMARY**

39 TESTED, TOP 3 HIGHLIGHTED

**Total Terpenoids: 7.6776%**



**SAFETY ANALYSIS - SUMMARY**

**$\Delta^9$ -THC per Unit: ✔ PASS**

**Pesticides: ✔ PASS**

**Mycotoxins: ✔ PASS**

**Residual Solvents: ✔ PASS**

**Heavy Metals: ✔ PASS**

**Microbiology: ✔ PASS**

**Foreign Material: ✔ PASS**

These results relate only to the sample included on this report. This report shall not be reproduced, except in full, without written approval of the laboratory.

**Sample Certification:** California Code of Regulations Title 16 Effect Date January 16, 2019. Authority: Section 26013, Business and Professions Code. Reference: Sections 26100, 26104 and 26110, Business and Professions Code.

**Decision Rule:** Statements of conformity (e.g. Pass/Fail) to specifications are made in this report without taking measurement uncertainty into account. Where statements of conformity are made in this report, the following decision rules are applied: PASS - Results within limits/specifications, FAIL - Results exceed limits/specifications.

**References:** limit of detection (LOD), limit of quantification (LOQ), not detected (ND), not tested (NT)




All LQC samples were performed and met the prescribed acceptance criteria in 4 CCR section 1730, as attested by:  
 Michael Pham  
 Date: 05/25/2022

Approved by: Josh Wurzer, President  
 Date: 05/25/2022



LEMONBERRY BREEZE (CBD 1:1) | DATE ISSUED 05/25/2022 | OVERALL BATCH RESULT: ✔ PASS

**CANNABINOID TEST RESULTS** - 05/24/2022 ✔ PASS

Tested by high-performance liquid chromatography with diode-array detection (HPLC-DAD). **Method:** QSP 1157 - Analysis of Cannabinoids by HPLC-DAD

**TOTAL CANNABINOIDS: 84.8%**

Total Cannabinoids (Total THC) + (Total CBD) + (Total CBG) + (Total THCV) + (Total CBC) + (Total CBDV) + Δ<sup>8</sup>-THC + CBL + CBN

**TOTAL THC: 40.731%**

Total THC (Δ<sup>9</sup>-THC+0.877\*THCa)

**TOTAL CBD: 40.171%**

Total CBD (CBD+0.877\*CBDA)

**TOTAL CBG: 2.476%**

Total CBG (CBG+0.877\*CBGa)

**TOTAL THCV: 0.422%**

Total THCV (THCV+0.877\*THCVa)

**TOTAL CBC: 0.8%**

Total CBC (CBC+0.877\*CBCa)

**TOTAL CBDV: 0.122%**

Total CBDV (CBDV+0.877\*CBDVa)

COMPOUND	LOD/LOQ (mg/g)	MEASUREMENT UNCERTAINTY (mg/g)	RESULT (mg/g)	RESULT (%)
Δ <sup>9</sup> -THC	0.06 / 0.26	±10.916	407.31	40.731
CBD	0.07 / 0.29	±14.462	401.71	40.171
CBG	0.06 / 0.19	±0.760	24.76	2.476
CBC	0.2 / 0.5	±0.18	8.0	0.80
THCV	0.1 / 0.2	±0.16	4.2	0.42
CBDV	0.04 / 0.15	±0.041	1.22	0.122
CBN	0.1 / 0.3	±0.03	0.6	0.06
Δ <sup>8</sup> -THC	0.1 / 0.4	N/A	ND	ND
THCa	0.05 / 0.14	N/A	ND	ND
THCVa	0.07 / 0.20	N/A	ND	ND
CBDA	0.02 / 0.19	N/A	ND	ND
CBDVa	0.03 / 0.53	N/A	ND	ND
CBGa	0.1 / 0.2	N/A	ND	ND
CBL	0.06 / 0.24	N/A	ND	ND
CBCa	0.07 / 0.28	N/A	ND	ND
<b>SUM OF CANNABINOIDS</b>			<b>847.8 mg/g</b>	<b>84.78%</b>

**UNIT MASS: 1 grams per Unit**

Δ <sup>9</sup> -THC per Unit	1100 per-package limit	407.31 mg/unit	PASS
Total THC per Unit		407.31 mg/unit	
CBD per Unit		401.71 mg/unit	
Total CBD per Unit		401.71 mg/unit	
Sum of Cannabinoids per Unit		847.8 mg/unit	
Total Cannabinoids per Unit		847.8 mg/unit	

**TERPENOID TEST RESULTS** - 05/25/2022

Terpene analysis utilizing gas chromatography-flame ionization detection (GC-FID). **Method:** QSP 1192 - Analysis of Terpenoids by GC-FID

COMPOUND	LOD/LOQ (mg/g)	MEASUREMENT UNCERTAINTY (mg/g)	RESULT (mg/g)	RESULT (%)
Myrcene	0.008 / 0.025	±0.3280	32.797	3.2797
Limonene	0.005 / 0.016	±0.1615	14.553	1.4553
Terpinolene	0.008 / 0.026	±0.1805	11.350	1.1350
α-Pinene	0.005 / 0.017	±0.0290	4.327	0.4327
β-Pinene	0.004 / 0.014	±0.0347	3.898	0.3898
β-Caryophyllene	0.004 / 0.012	±0.0866	3.128	0.3128
β-Ocimene	0.006 / 0.020	±0.0321	1.284	0.1284
Terpineol	0.009 / 0.031	±0.0472	0.988	0.0988
Linalool	0.009 / 0.032	±0.0284	0.958	0.0958
Fenchol	0.010 / 0.034	±0.0213	0.707	0.0707
α-Humulene	0.009 / 0.029	±0.0177	0.707	0.0707
α-Phellandrene	0.006 / 0.020	±0.0037	0.345	0.0345
α-Terpinene	0.005 / 0.017	±0.0036	0.311	0.0311
γ-Terpinene	0.006 / 0.018	±0.0042	0.308	0.0308
Camphene	0.005 / 0.015	±0.0024	0.267	0.0267
Δ <sup>3</sup> -Carene	0.005 / 0.018	±0.0026	0.237	0.0237
trans-β-Farnesene	0.008 / 0.025	±0.0034	0.122	0.0122
Borneol	0.005 / 0.016	±0.0039	0.119	0.0119
Eucalyptol	0.006 / 0.018	±0.0013	0.068	0.0068
Caryophyllene Oxide	0.010 / 0.033	±0.0021	0.058	0.0058
α-Bisabolol	0.008 / 0.026	±0.0021	0.051	0.0051
Sabinene Hydrate	0.006 / 0.022	±0.0012	0.041	0.0041
Fenchone	0.009 / 0.028	±0.0009	0.039	0.0039
Citronellol	0.003 / 0.010	±0.0014	0.038	0.0038
p-Cymene	0.005 / 0.016	±0.0007	0.035	0.0035
Sabinene	0.004 / 0.014	±0.0002	0.020	0.0020
Geraniol	0.002 / 0.007	±0.0007	0.020	0.0020
Nerol	0.003 / 0.011	N/A	<LOQ	<LOQ
α-Cedrene	0.005 / 0.016	N/A	<LOQ	<LOQ
Valencene	0.009 / 0.030	N/A	<LOQ	<LOQ
Nerolidol	0.006 / 0.019	N/A	<LOQ	<LOQ
Guaiol	0.009 / 0.030	N/A	<LOQ	<LOQ
Isopulegol	0.005 / 0.016	N/A	ND	ND
Camphor	0.006 / 0.019	N/A	ND	ND
Isoborneol	0.004 / 0.012	N/A	ND	ND
Menthol	0.008 / 0.025	N/A	ND	ND
Pulegone	0.003 / 0.011	N/A	ND	ND
Geranyl Acetate	0.004 / 0.014	N/A	ND	ND
Cedrol	0.008 / 0.027	N/A	ND	ND
<b>TOTAL TERPENOIDS</b>			<b>76.776 mg/g</b>	<b>7.6776%</b>